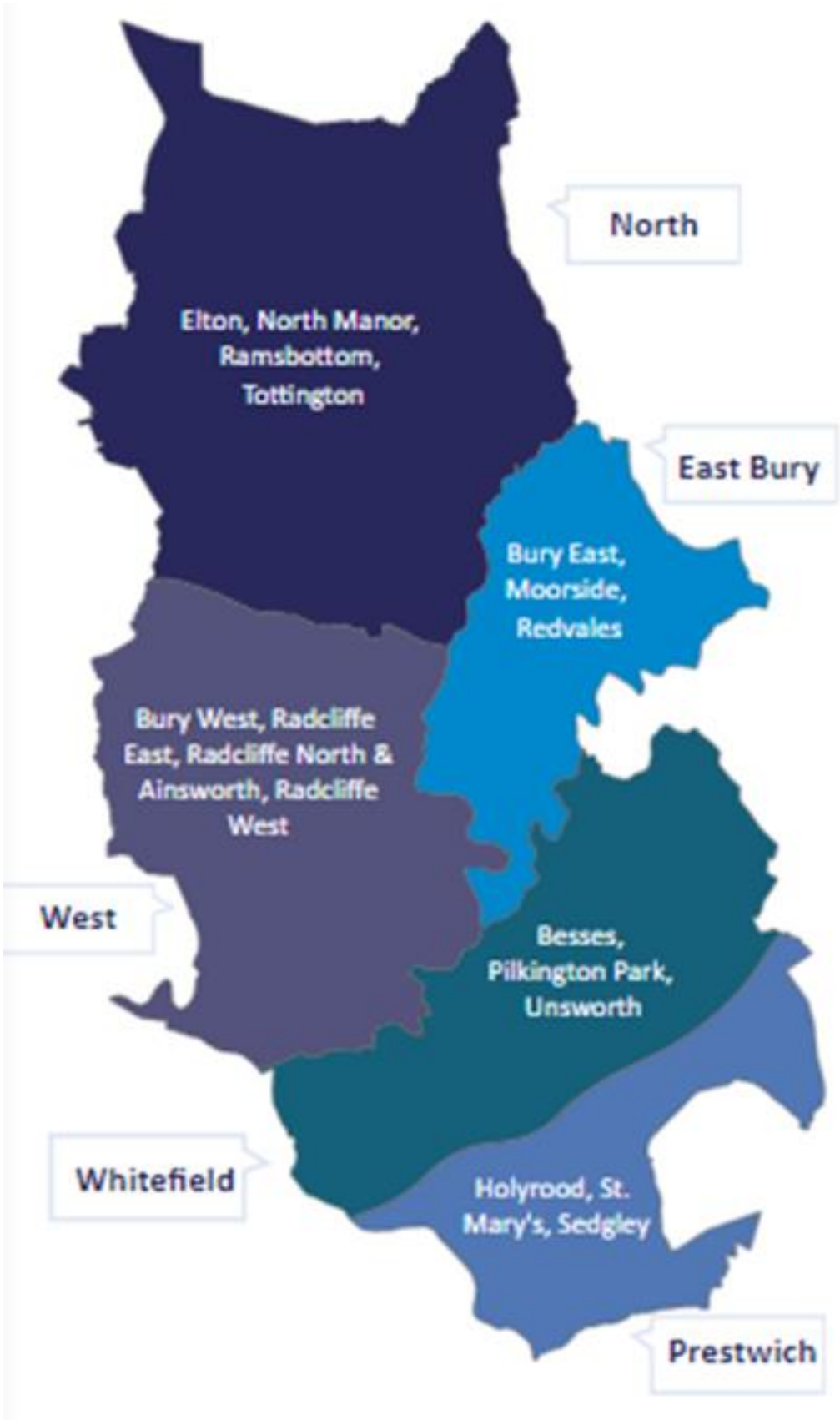
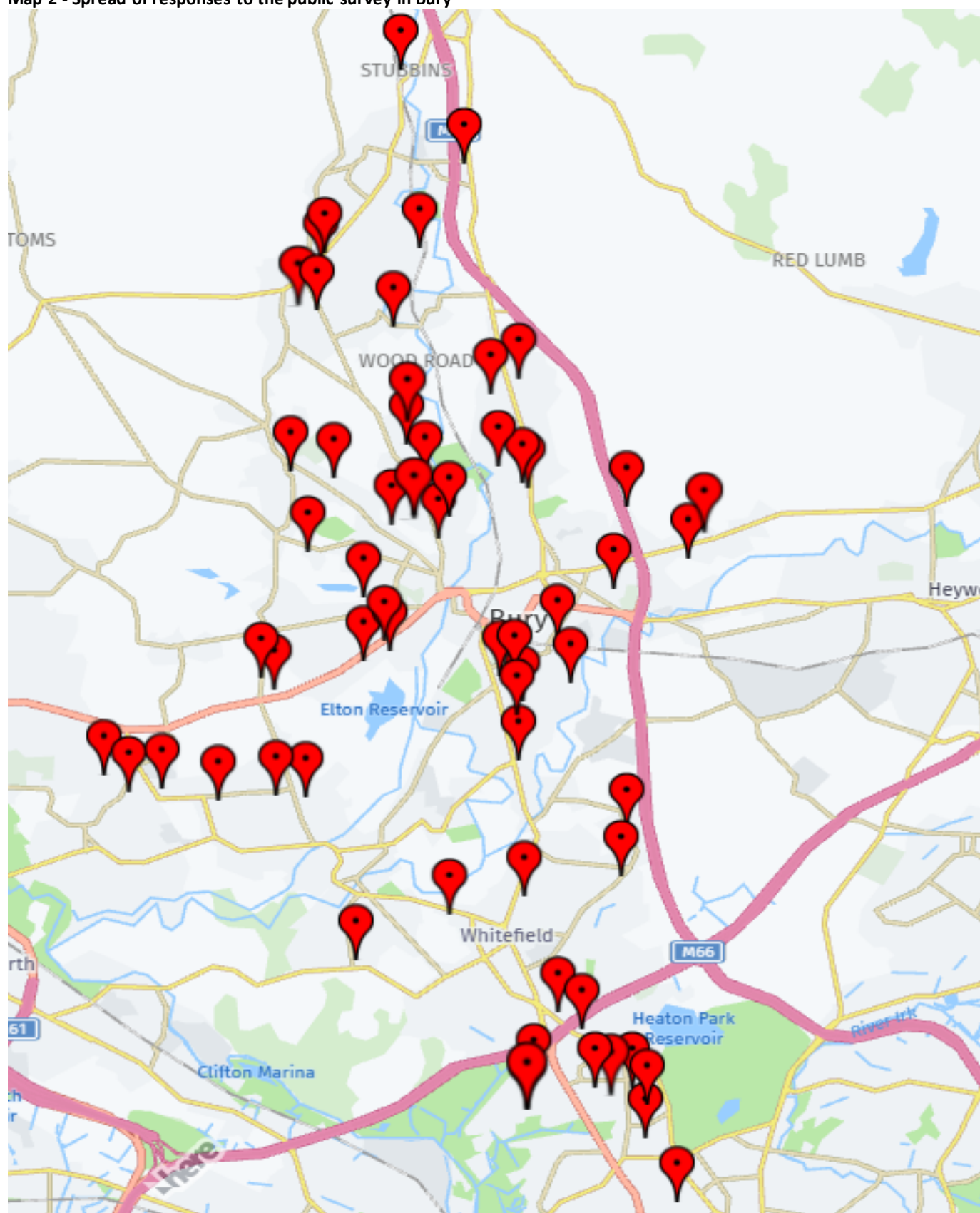


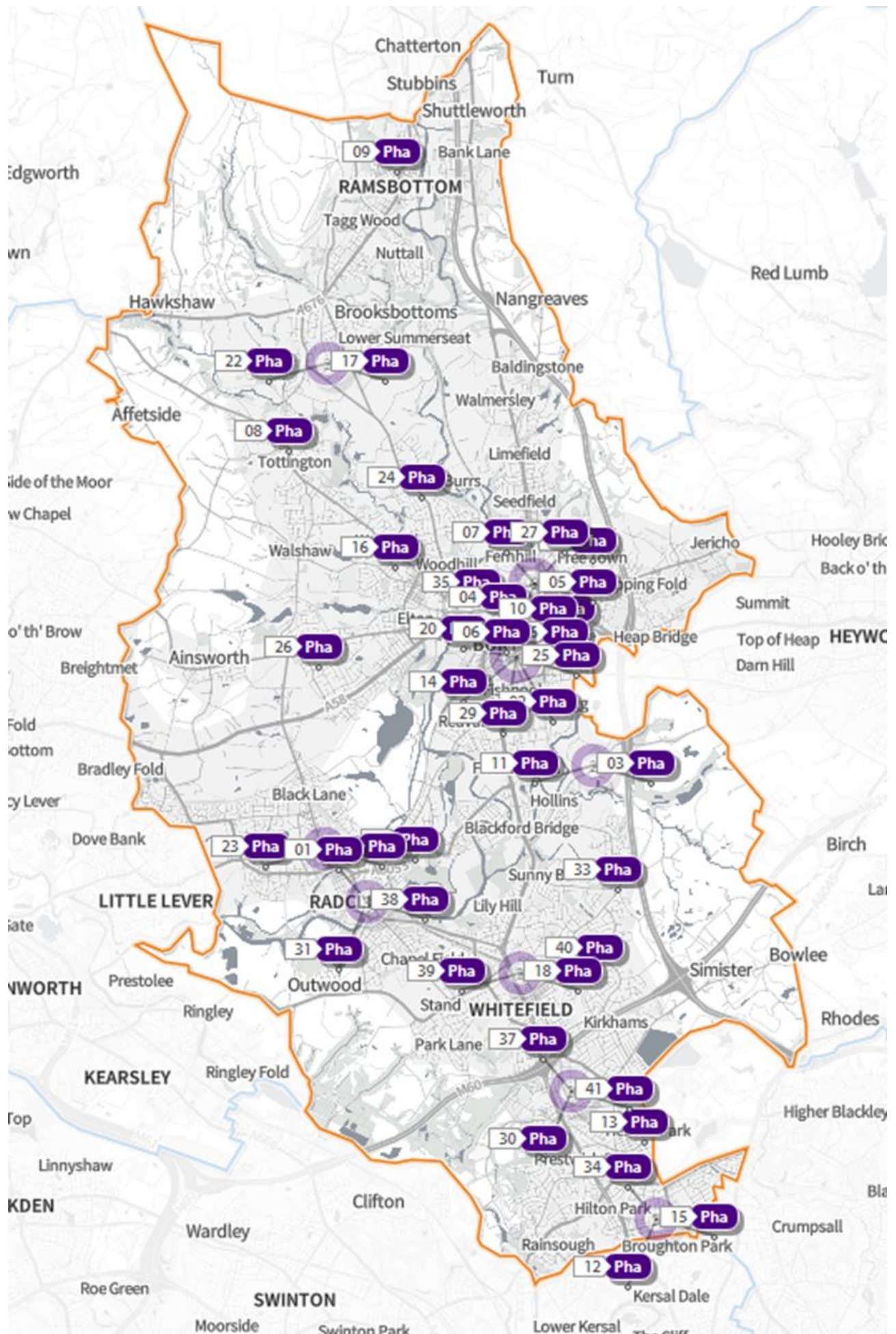
Map 1 -Bury neighbourhoods and wards



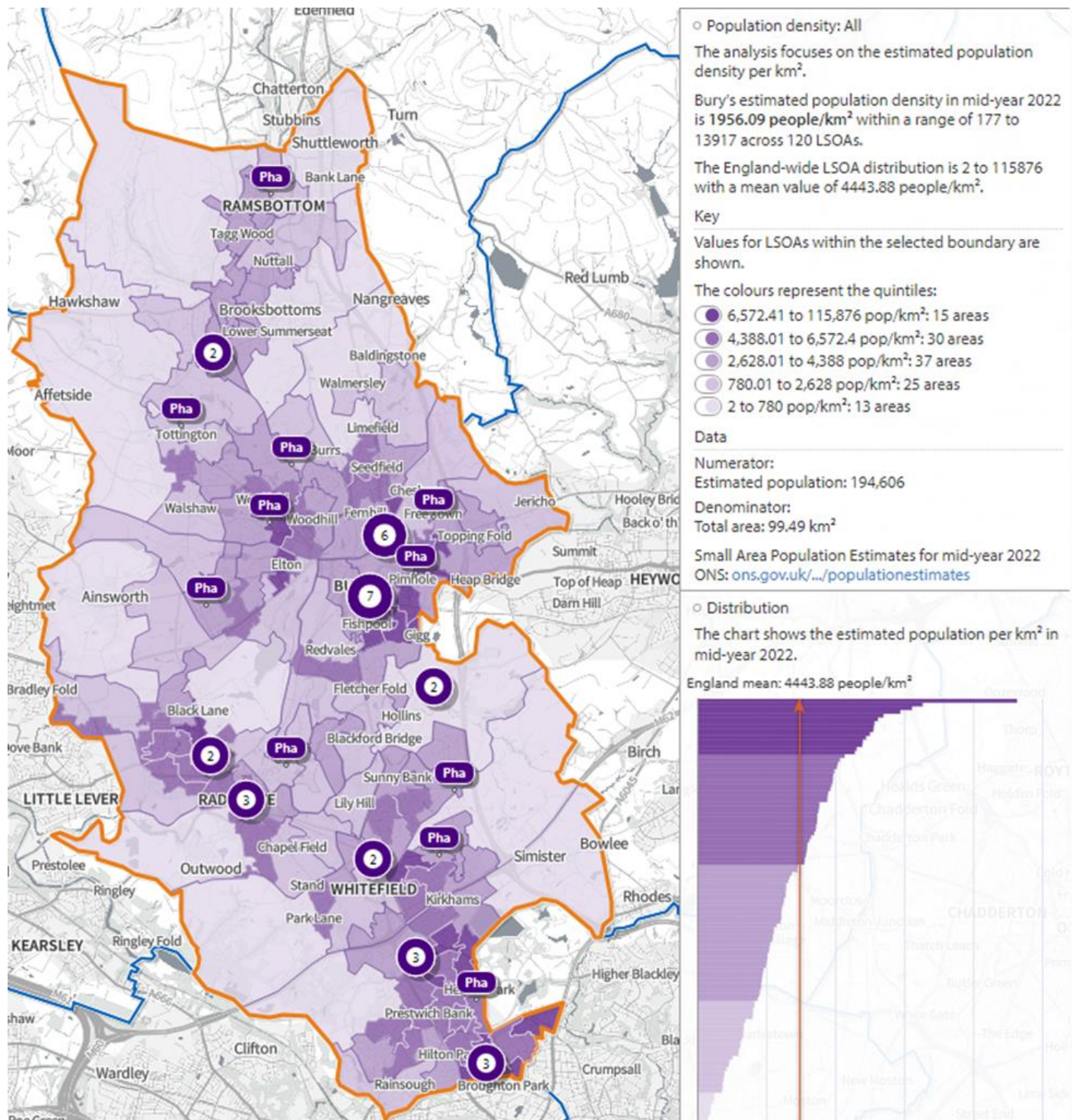
Map 2 - Spread of responses to the public survey in Bury



Map 3 - Bury pharmacies location (source: [SHAPE - Shape](#))

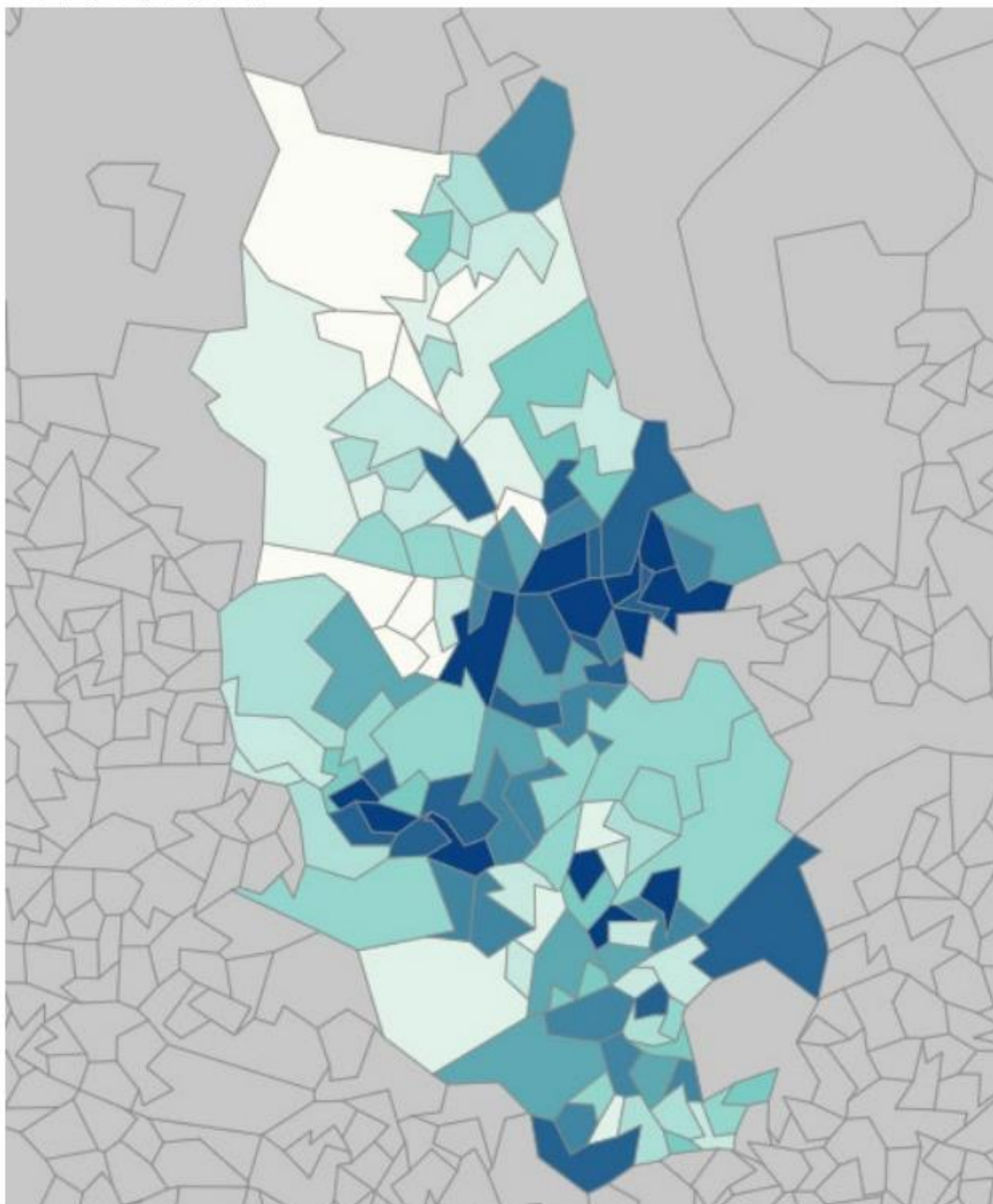
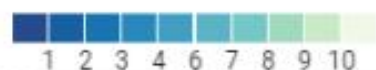


Map 4 - Population density (source: SHAPE - Shape)

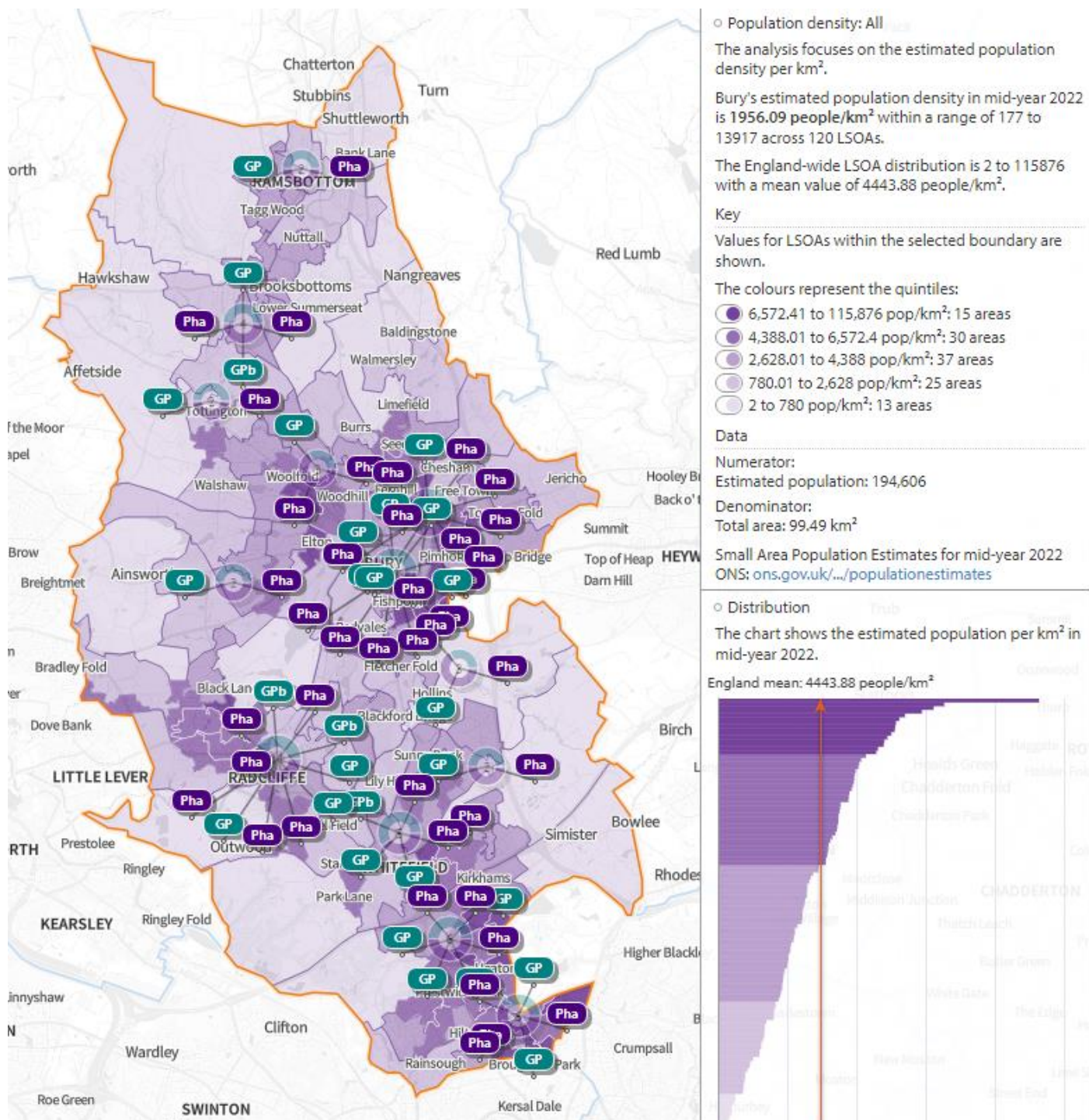


Map 5 – LSOAs in Bury showing their national deprivation decile based on ten groups ranging from ‘1% most deprived’ (decile 1) to ‘10% least deprived’ (decile 10) in England (Source: [Deprivation | The Bury Directory](#))

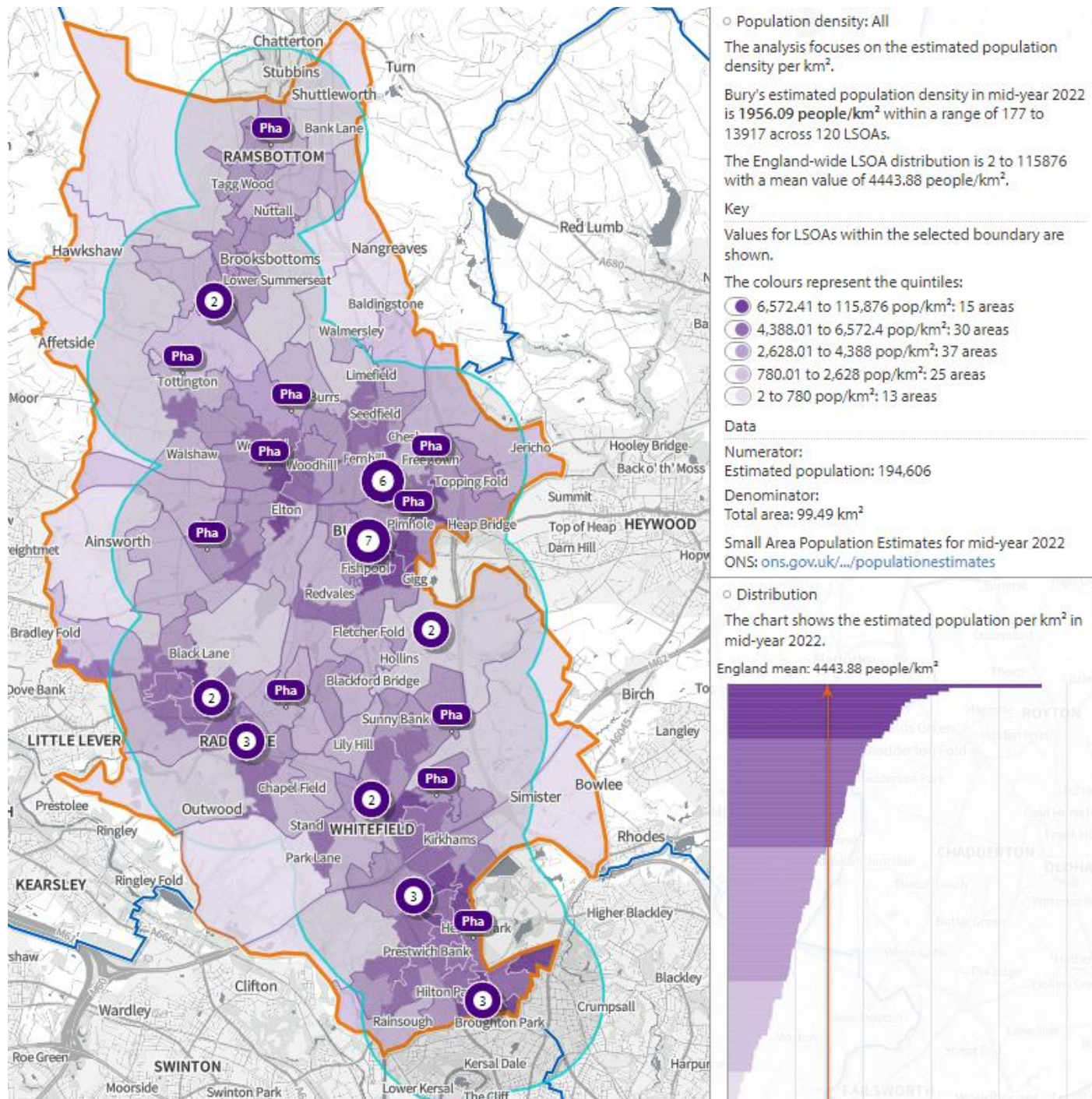
Deprivation Deciles



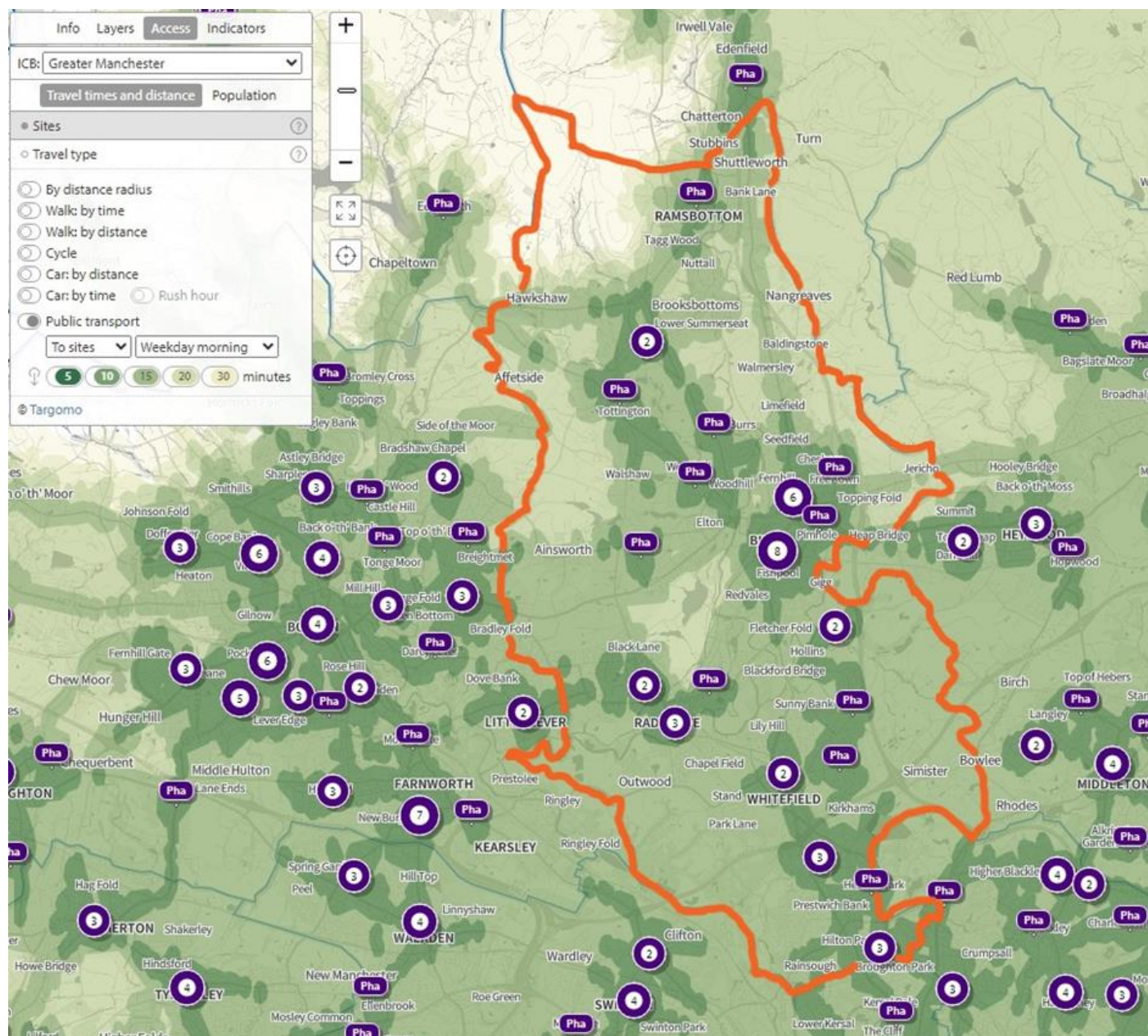
Map 6 - Location of Pharmacies & GP practices (Source: [SHAPE - Shape](#))



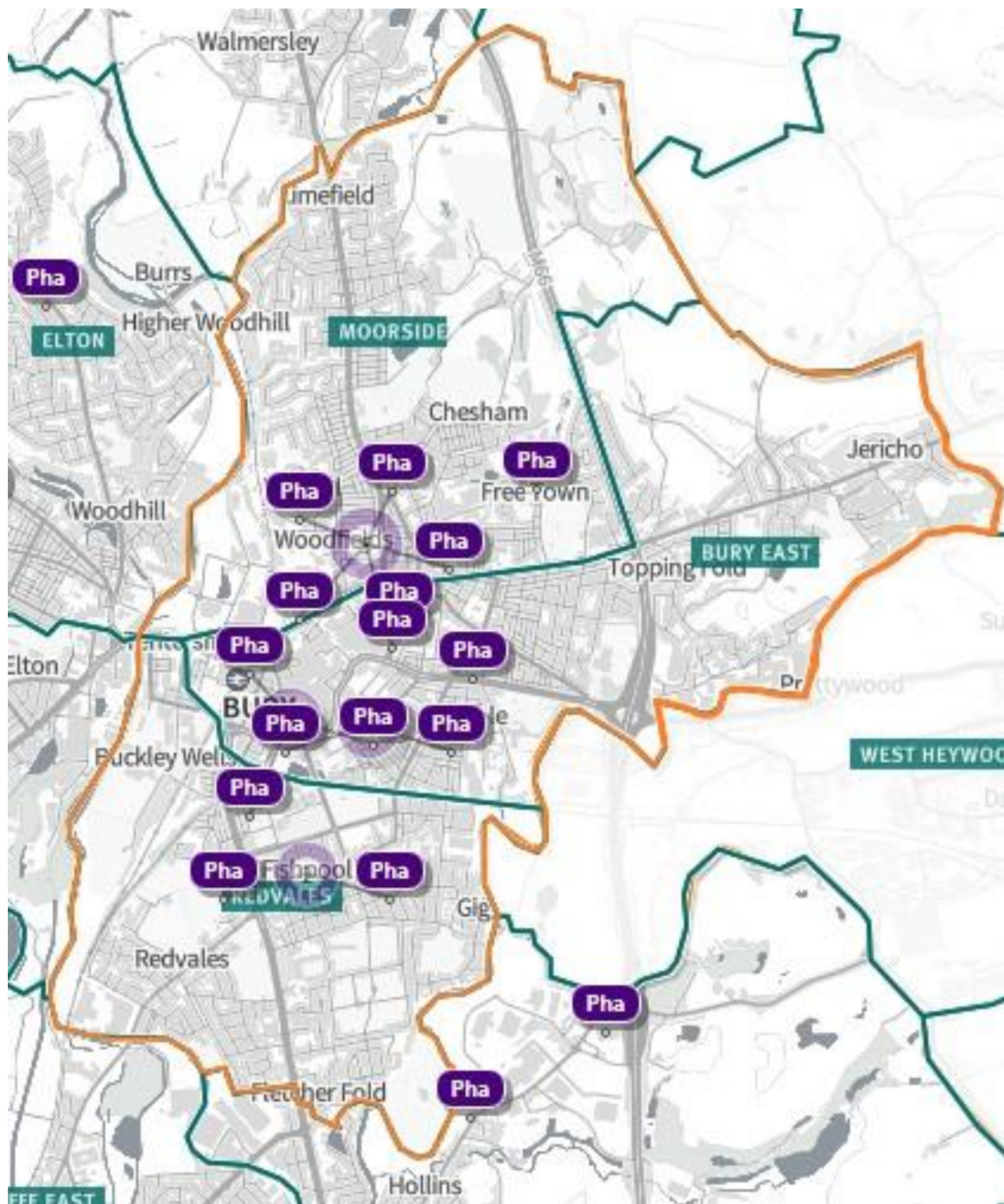
Map 7 - Bury pharmacies showing 1 mile travel distance (Source: [SHAPE - Shape](#))



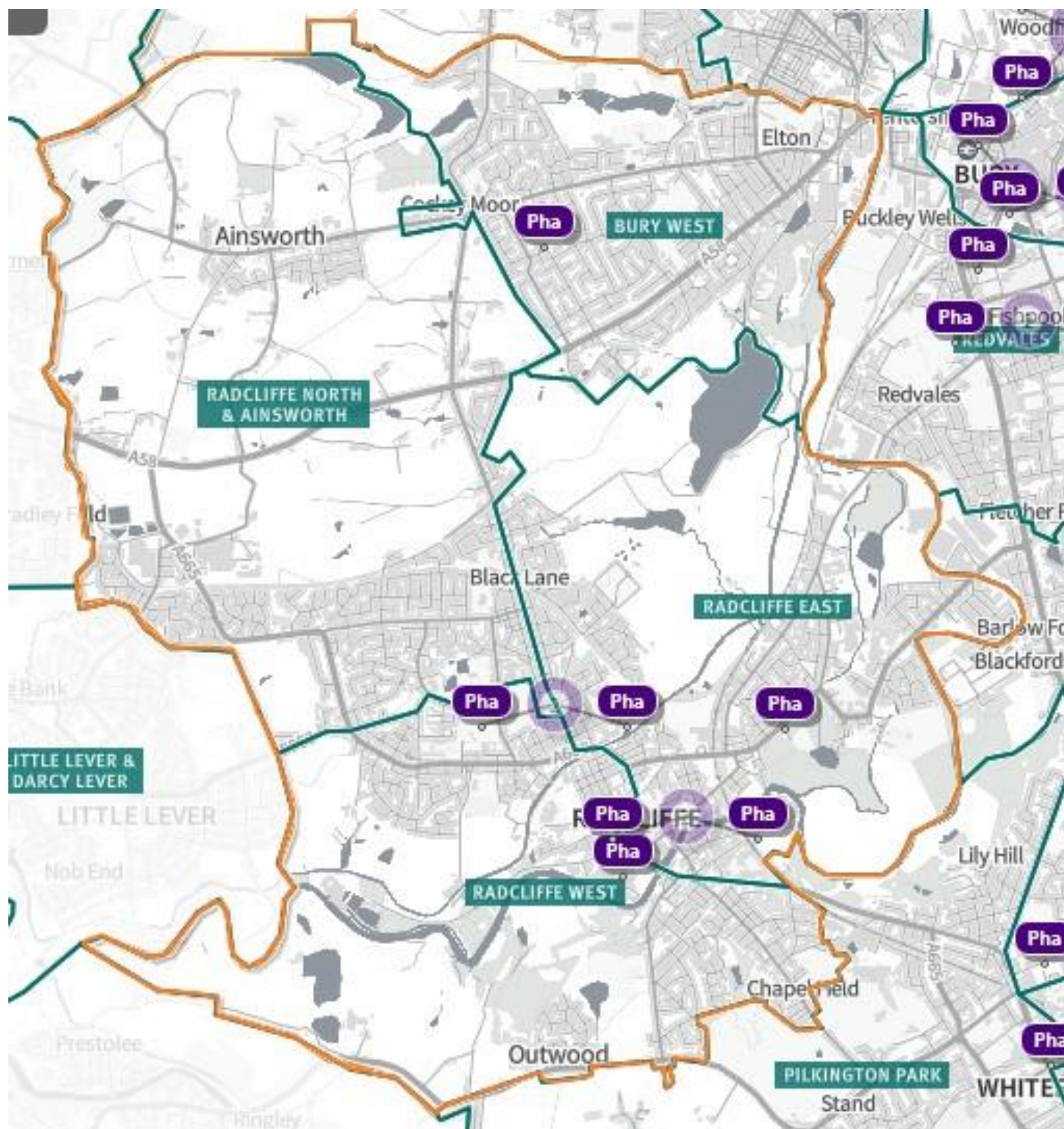
Map 8 - Bury and surrounding Borough Pharmacies showing public transport travel time (Source: [SHAPE - Shape](#))



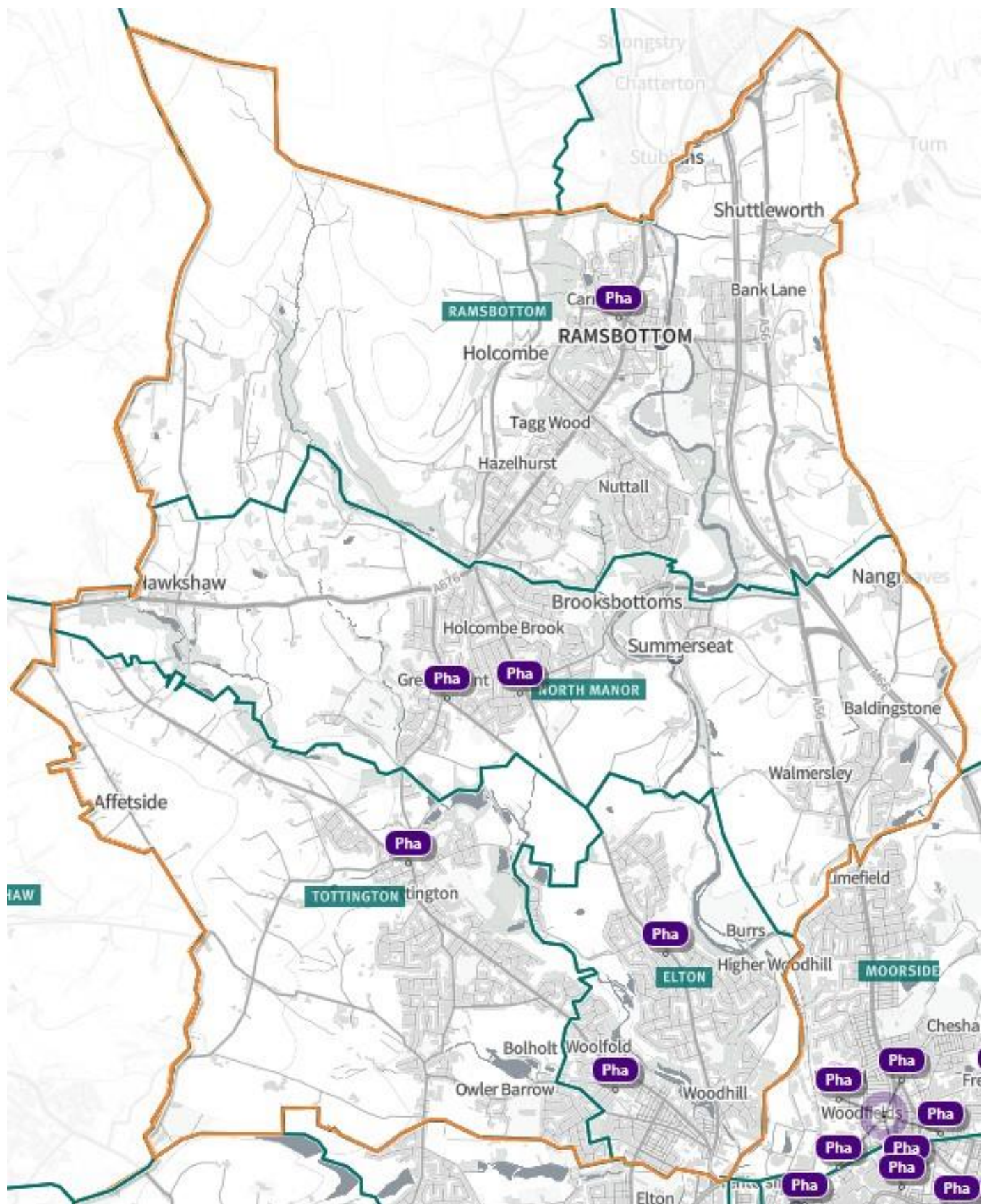
Map 9 - East Bury Neighbourhood Pharmacy Locations (Source: [SHAPE - Shape](#))



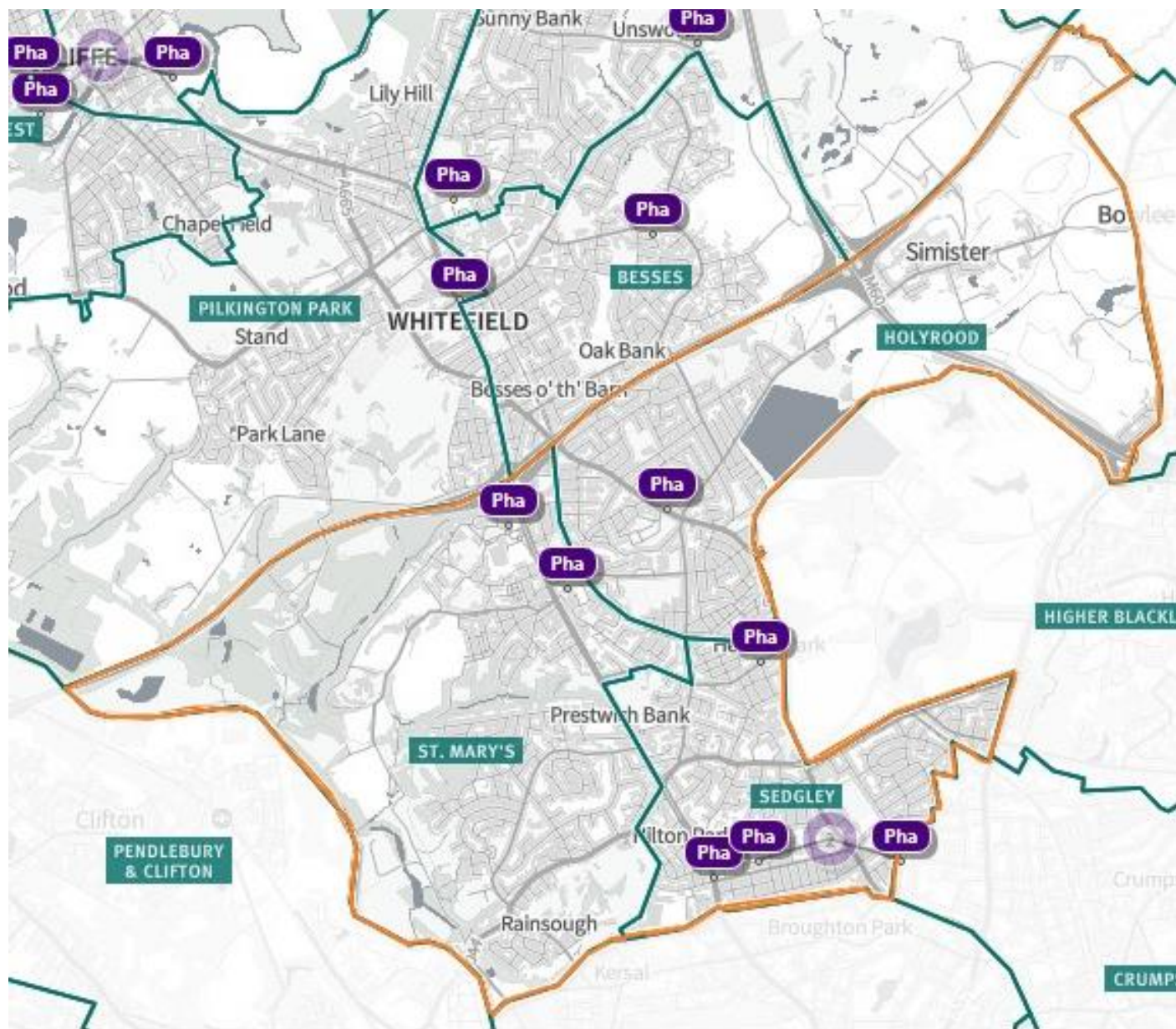
Map 10 - West Neighbourhood Pharmacy Locations (Source: [SHAPE - Shape](#))



Map 11 - North Neighbourhood Pharmacy Locations (Source: [SHAPE - Shape](#))



Map 12 - Prestwich Neighbourhood Pharmacy Locations (Source: [SHAPE - Shape](#))



Map 13 - Whitefield Neighbourhood Pharmacy Locations (Source: [SHAPE - Shape](#))

